

WAC 296-27-01101 Recording criteria. (1) Employers required to keep records by this chapter must record each fatality, injury and illness that:

(a) Is work-related, see WAC 296-27-01103;

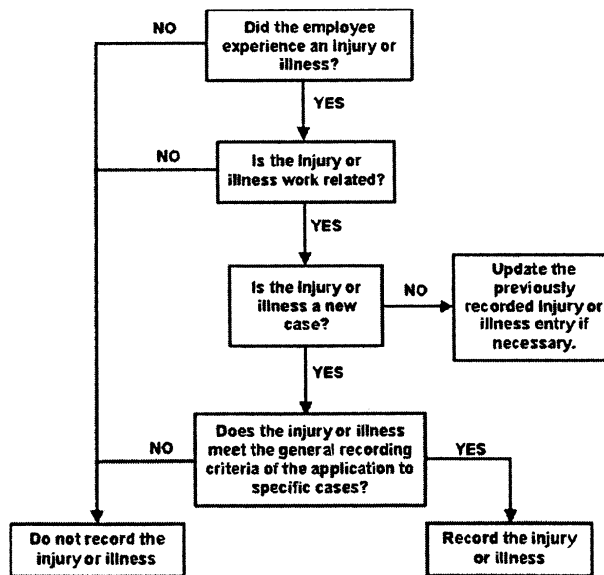
(b) Is a new case, see WAC 296-27-01105; and

(c) Meets one or more of the general recording criteria of WAC 296-27-01107.

(2) Additional criteria for specific cases such as needlestick and sharps injury cases, hearing loss cases, medical removal cases, and tuberculosis cases are located in WAC 296-27-01109 through 296-27-01115.

Note: The decision tree for recording work-related injuries and illnesses below shows the steps involved in determining whether a particular injury or illness is reportable.

Decision Tree



[Statutory Authority: RCW 49.17.010, 49.17.040, and 49.17.050. WSR 19-17-068, § 296-27-01101, filed 8/20/19, effective 1/1/20; WSR 15-11-066, § 296-27-01101, filed 5/19/15, effective 7/1/15; WSR 02-01-064, § 296-27-01101, filed 12/14/01, effective 1/1/02.]